

Overview

Small chip size, 0.5 x 0.52 um. Wide operating temperature range from -40 to 125 degree.
 Notwithstanding the downsized chip size, KH9155 series ESD and latch-up test have complied with AEC-Q100 standard.

Features

Oscillation frequency	KH9155ALX	10 ~ 60MHz
	KH9155BL1*1	50 ~ 100MHz
Operating Voltage		1.6 ~ 3.63V
Operating Temperature		-40 ~ 125°C
Standby Mode INHN="L"	Q Output "Hi-z"	
	Oscillation Stopped	
INHN Input Voltage Level		C-MOS
Q Output Duty Level		C-MOS
Q Output Current		8mA (VDD=2.7V)
Q Output Load (Drive Capacity)		15pF

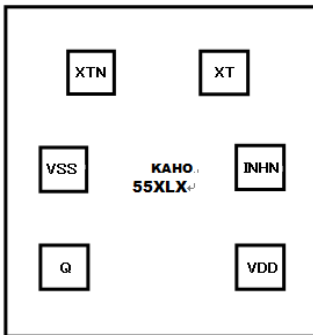
*1 : Under development.

Device Selection Table

Version	Output frequency
KH9155AL1	fo
KH9155AL2	fo/2
KH9155AL3	fo/4
KH9155AL4	fo/8
KH9155AL5	fo/16
KH9155AL6	fo/32
KH9155AL7	fo/64
KH9155BL1*1	fo

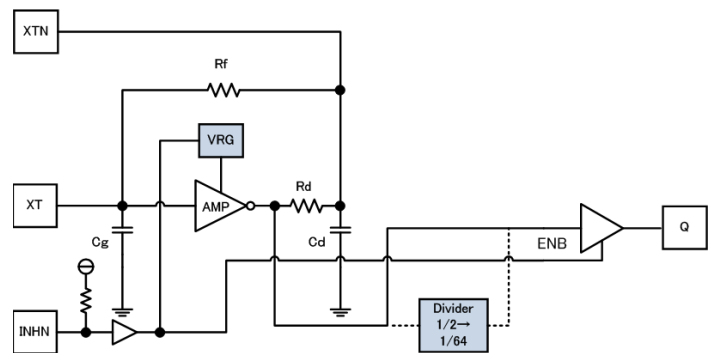
*1 : Under development.

PAD Locations



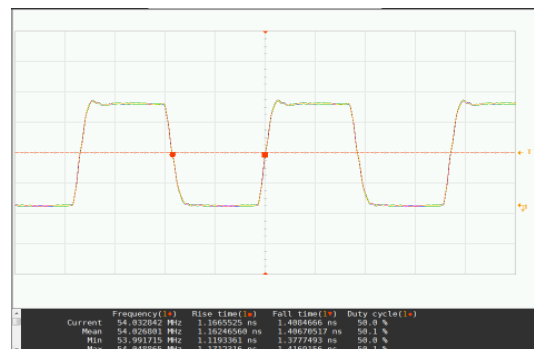
Chip Size	0.50x0.52mm
PAD Size	80x80µm
Chip Thickness	100±20µm
Chip Base	VSS Level

Block Diagram



Output waveform

KH9155AL1 54MHz CL=15pF VDD=3.3V



Reliability

Test Model		Performance Values
ESD	HBM	>4000V
	MM	>400V
	FI-CDM	>1000V
Latch-up	Current Test	>200mA
	Voltage Test	>5.4V

Notes: The document is a brief data sheet of the product.

Please contact with us by email for detailed data sheet, when needed.